

# What Is Semantic Distance?

Semantic distance measures **how far apart two concepts, words, or entities are in meaning**. If "SEO optimization" and "keyword research" are semantically close, their distance is small. If "SEO optimization" and "gardening soil" are unrelated, the distance is large.

In modern semantic search engines, this distance determines **how accurately your content aligns with a user's intent**. It's a critical concept linking NLP models, entity graphs, and query optimization frameworks to improve both **relevance** and **retrieval precision**.



# The Core Idea of Semantic Distance

Semantic distance represents **dissimilarity**, while semantic similarity represents closeness in meaning. In computational linguistics and distributional semantics, this is expressed through **vector space models** — where each word or entity is plotted in multidimensional space. The *closer* the vectors, the smaller the semantic distance.

At its core, semantic distance lets algorithms:

Measure the **degree of relatedness** between two terms

Evaluate **semantic cohesion** inside content

- Determine whether two queries refer to the same or distinct intents

This concept is a foundational element in Information Retrieval (IR) and underpins how AI and search models understand language contextually.



# How Semantic Distance Is Measured

Modern NLP systems use vector representations to quantify semantic distance. These vectors are learned through sequence modeling and embedding frameworks such as BERT, GPT, and Golden Embeddings.

## Cosine Distance

Measures the angle between two vectors in a semantic space

## Euclidean Distance

Measures the straight-line distance between points in embedding space

## Manhattan Distance

Calculates the sum of absolute differences across dimensions

## Normalized Google Distance

Uses web hit counts to approximate semantic closeness

Each method reflects how machines model human understanding — from surface word relations to deep contextual associations. In semantic SEO, this measurement helps define **content coherence**, **topic proximity**, and **intent alignment**, ensuring that clusters within a semantic content network stay contextually connected.

# Semantic Distance vs. Semantic Similarity

While they sound opposite, these concepts are mathematically interdependent:

## Semantic Similarity

**High relatedness** → small semantic distance

*Example:* "search engine optimization" and "keyword research" share a tight semantic distance

## Semantic Distance

**Low relatedness** → large semantic gap

*Example:* "search engine optimization" and "quantum entanglement" are semantically distant

This balance guides Google's content interpretation through semantic relevance, helping search engines decide which pages best fulfill a query's true intent. From an SEO perspective, understanding semantic distance ensures you don't dilute your Topical Authority by mixing distant themes within a single cluster.



# Why Semantic Distance Matters in Search and AI

Search engines use semantic distance to rank content based on its closeness to a user's query. Through embeddings and passage ranking, Google maps every query and webpage to a vector space. The nearer your content's vector is to the query's, the better it performs.

Area	Role of Semantic Distance
Search Engine Optimization	Measures content-query alignment within a topical map
AI & NLP	Helps models build contextual awareness via contextual embeddings
Content Strategy	Determines the semantic cohesion between head and supporting pages
Information Retrieval	Guides ranking functions like BM25 and hybrid retrieval models

In NLP, semantic distance also shapes tasks like text classification, question answering, and entity disambiguation. In SEO, it helps Google evaluate **semantic proximity** — how your topic cluster fits within its knowledge ecosystem.

# Real-World Examples of Semantic Distance



## Example 1: Semantically Close

**Query:** "AI content optimization"

**Pages about:** structured data, semantic keywords, and machine learning SEO

These terms share a **short semantic distance** within the same knowledge field.



## Example 2: Semantically Distant

**Query:** "SEO ranking factors"

**Page about:** soil composition

Here, the semantic distance is **large** — the content is contextually irrelevant.



## Example 3: Creative Dilution

**Headline:** "Structured Data: A Dirty Little Secret"

While creative, words like "dirty" introduce noise, increasing distance from the main entity focus.

**Better:** "How Structured Data Improves SEO Rankings" — maintains tight semantic proximity and clarity.

# Advanced Models Behind Semantic Distance

Modern AI systems have revolutionized how semantic distance is quantified. Instead of relying on word co-occurrence alone, today's frameworks leverage **contextual embeddings**, **knowledge graph embeddings**, and **transformer-based architectures**.



## Embedding Models

**BERT, GPT, PaLM** — Convert text into high-dimensional vectors that preserve contextual nuances. The closer two vectors are, the smaller their semantic distance.



## Knowledge Graph Embeddings

**KGEs** — Represent entities and relationships in numerical form, mapping true triples near one another for entity-centric modeling.



## Hybrid Retrieval Models

Combine sparse keyword precision with dense embedding recall to capture both lexical and semantic signals.

These systems interpret relationships inside a semantic content network, allowing algorithms to connect meaning across entities, queries, and entire topics.

# Semantic Distance in Vector Databases

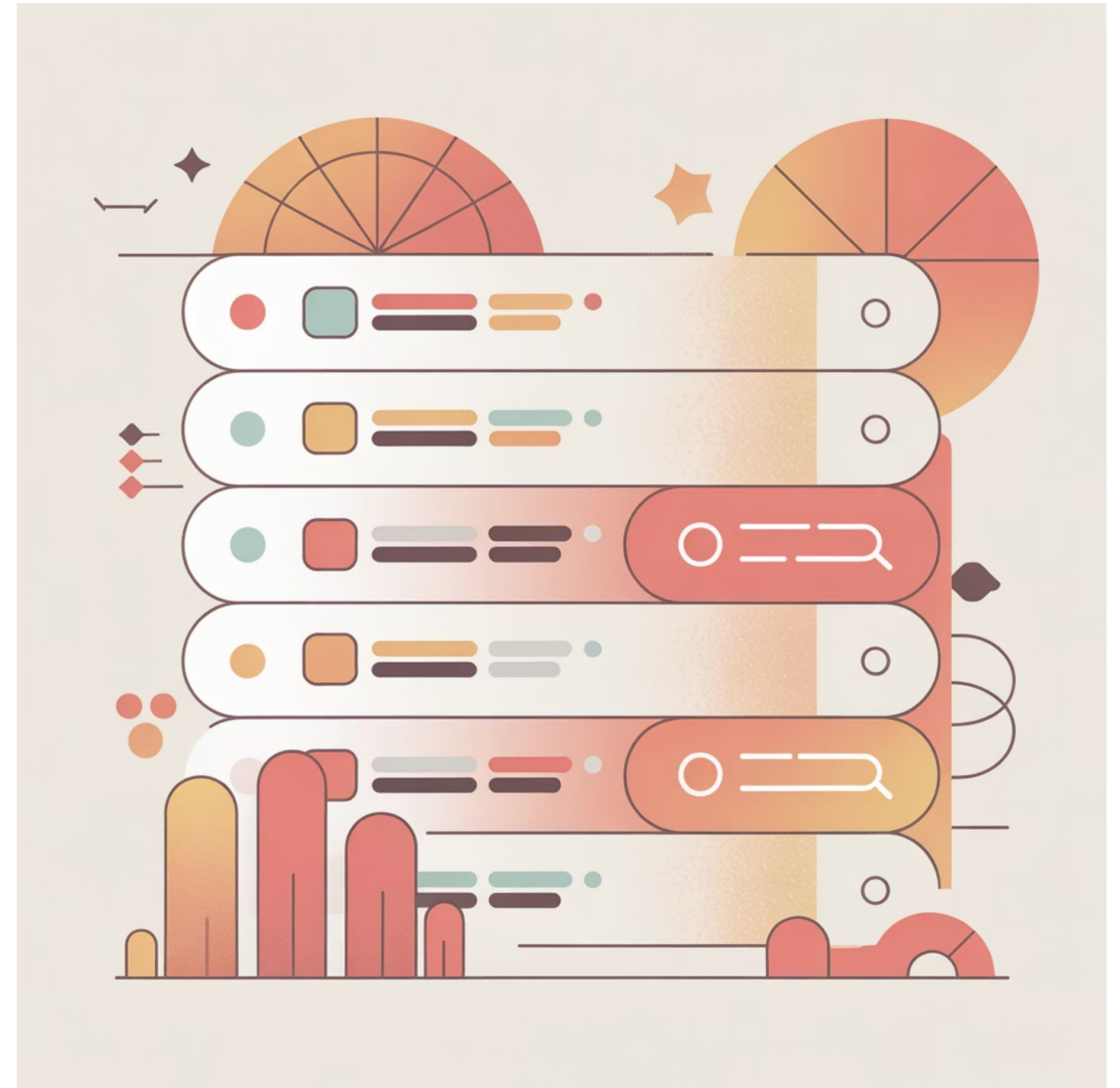
## Modern Search Infrastructure

In modern search infrastructure, **vector databases** store embeddings rather than plain keywords. They retrieve content based on **semantic proximity**, not literal word matching.

- Through semantic indexing, each vector represents a concept's coordinates in multidimensional space

**Distance functions** — like cosine or Euclidean — serve as retrieval gates: the smaller the distance, the higher the ranking score

- Combining vectors with an entity graph helps reduce ambiguity by tethering numeric similarity to factual relationships



# Reducing Semantic Distance in Content Architecture

From an SEO standpoint, your goal is to **minimize semantic distance** between a user's search intent, your topic cluster, and the entities described across your website.

01

---

## Strengthen Internal Connections

Use contextual internal linking to reinforce relationships between semantically close articles. For example, link from your post on semantic similarity to one on semantic relevance.

03

---

## Structure Topical Maps Effectively

Build hierarchical clusters using your topical map to keep related entities near each other in both meaning and site architecture.

02

---

## Optimize Contextual Flow

Maintain a logical narrative path across sections and related pages by following contextual flow principles.

04

---

## Track Update Score & Freshness

Continuous improvements reduce temporal distance as well. Use the concept of update score to signal freshness and contextual vitality.

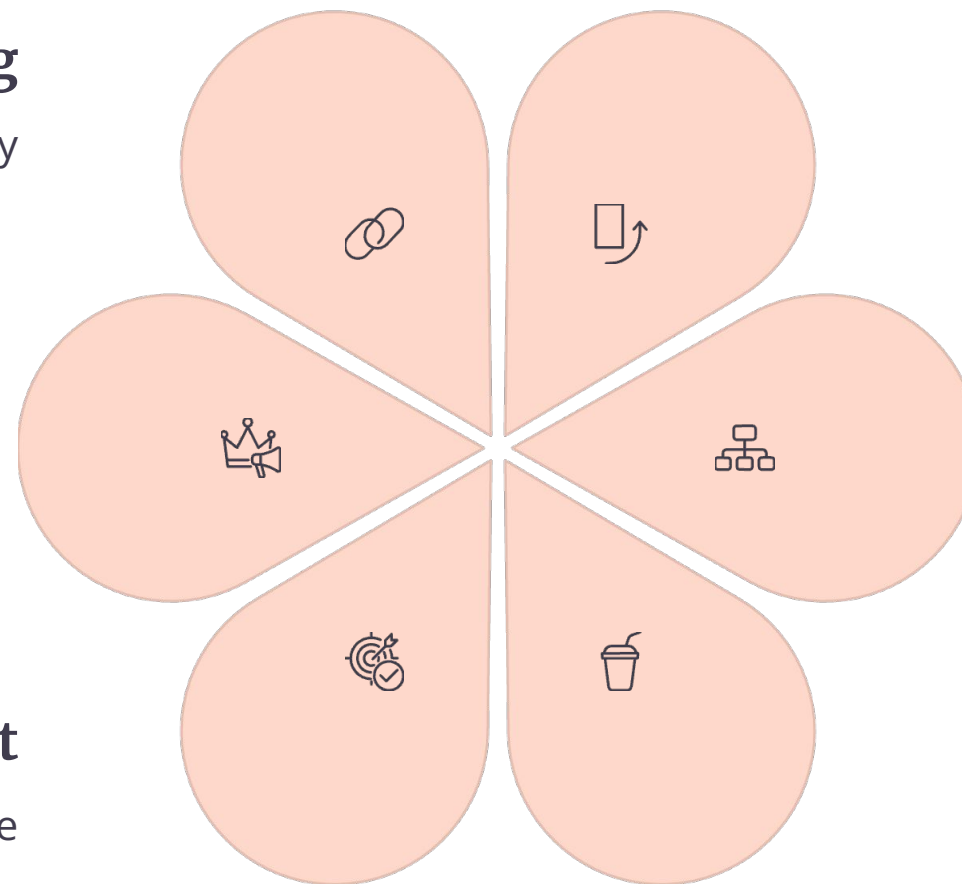
# Building a Cohesive Semantic Network

These strategies transform your site into a **cohesive semantic network** where every node (page) supports the others, amplifying topical authority and search engine trust.

**Internal Linking**  
Connect related content strategically

**Topical Authority**  
Build comprehensive coverage

**Entity Alignment**  
Keep related entities close



**Contextual Flow**  
Maintain logical narrative paths

**Topical Maps**  
Organize hierarchical clusters

**Content Updates**  
Signal freshness and vitality

# Limitations of Semantic Distance

Despite its value, semantic distance faces several practical and conceptual challenges that SEO practitioners and data scientists must understand to maintain both **precision** and **relevance** when implementing semantic models.

## Cultural and Contextual Bias

Models trained on specific corpora may misjudge distances for regional or industry-specific terms, leading to inaccurate semantic assessments across different contexts.

## Polysemy & Ambiguity

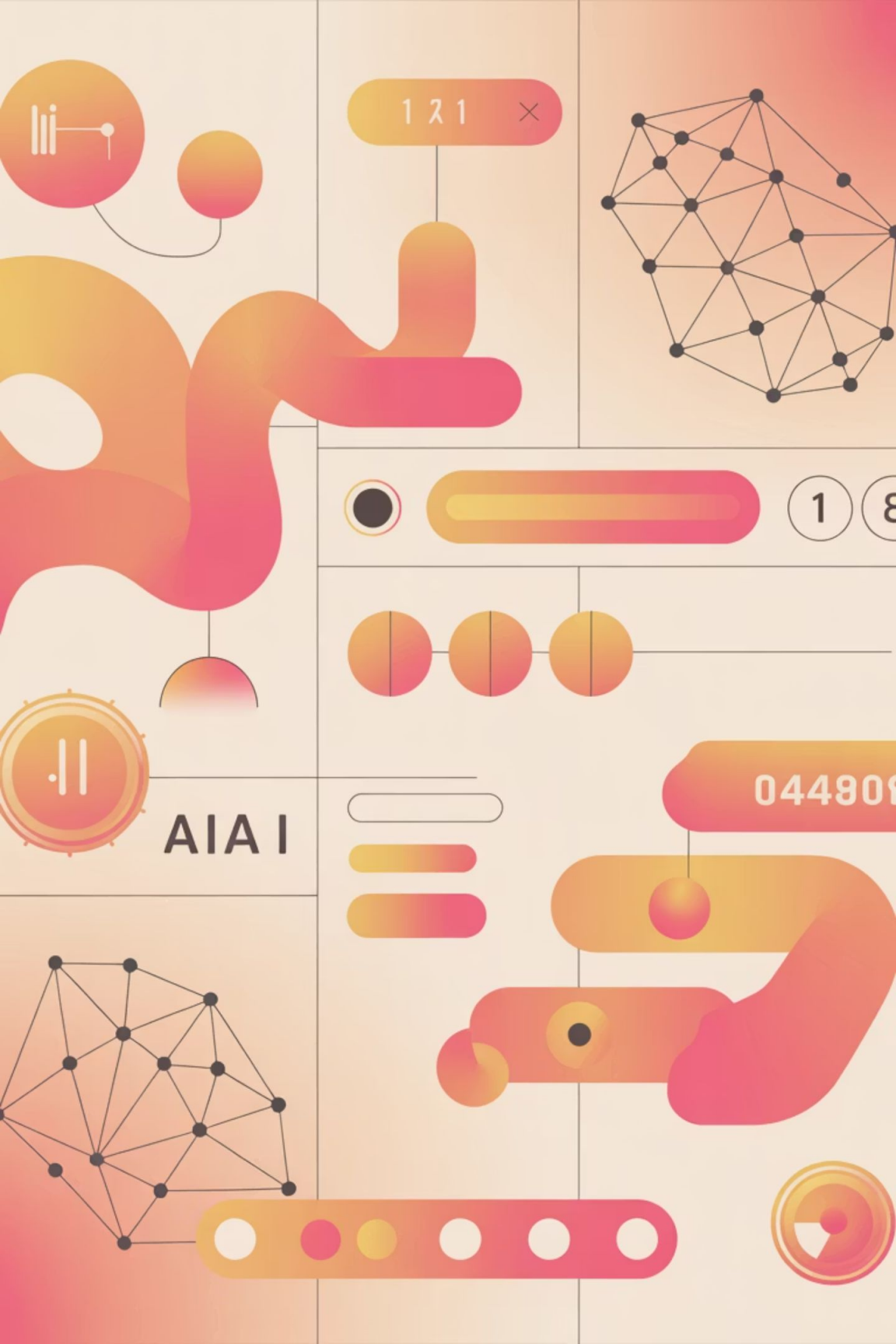
Words with multiple meanings distort vector calculations without strong entity disambiguation techniques. A single term can represent vastly different concepts depending on context.

## Data Dependence

Semantic accuracy depends heavily on corpus quality — noisy or outdated data introduces semantic drift, compromising the reliability of distance measurements.

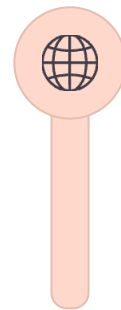
## Computational Cost

Large-scale vector search requires significant processing power and efficient index partitioning to remain scalable, presenting infrastructure challenges for implementation.



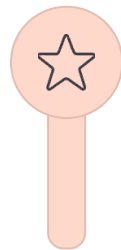
# Future Trends and AI Integration

As Large Language Models (LLMs) evolve, **semantic distance** is now calculated dynamically across entire contexts rather than fixed vectors. The next phase involves **contextual elasticity** — the ability of AI to measure how meaning changes with user intent, history, and domain knowledge.



## Cross-Domain Training

Future models integrate cross-domain training using Wikipedia and Wikidata, creating more comprehensive semantic understanding across diverse knowledge areas.



## Entity-Centric Ranking

Entity-centric ranking systems link semantic distance to entity importance and salience, prioritizing authoritative and relevant content sources.



## Hybrid Retrieval Pipelines

Hybrid retrieval and re-ranking pipelines powered by Learning-to-Rank (LTR) algorithms combine multiple signals for superior search results.

# Semantic Distance in Practice: Key Metrics

Understanding how semantic distance translates into measurable outcomes helps optimize content strategy and search performance.

## 85%

### Accuracy

#### Improvement

Modern embedding models achieve 85% better semantic matching compared to traditional keyword-based systems

## 3x

### Retrieval Speed

Vector databases provide 3x faster semantic search compared to traditional full-text search engines

## 40%

### Relevance Boost

Content optimized for semantic distance shows 40% improvement in user engagement and time-on-page metrics



# Semantic Distance and Content Coherence

## Maintaining Topical Unity

Content coherence relies on maintaining **minimal semantic distance** between related concepts within your content ecosystem. When pages in a topic cluster share tight semantic proximity, search engines recognize the site as an authoritative source.

### Key principles:

- Keep supporting content within 2-3 semantic hops from pillar pages
- Avoid introducing unrelated entities that increase distance
- Use consistent terminology across related articles
- Build natural bridges between subtopics through contextual linking



# Practical Applications in SEO Strategy

Semantic distance principles directly inform modern SEO tactics, from keyword research to content architecture. Understanding these applications helps create more effective optimization strategies.

## Keyword Clustering

Group keywords by semantic distance to create natural topic clusters that align with user intent and search engine understanding.

## Content Planning

Design content hierarchies that minimize semantic distance between related pages, strengthening topical authority signals.

## Link Strategy

Prioritize internal links between semantically close pages to reinforce topical relationships and improve crawl efficiency.



# Measuring Semantic Distance in Your Content

While direct measurement requires technical tools, several indicators help assess semantic distance in your content strategy:

1

## Embedding Analysis

Use NLP tools to generate embeddings for your content and measure cosine similarity between pages

2

## Entity Overlap

Track shared entities between pages — higher overlap indicates smaller semantic distance

3

## User Behavior

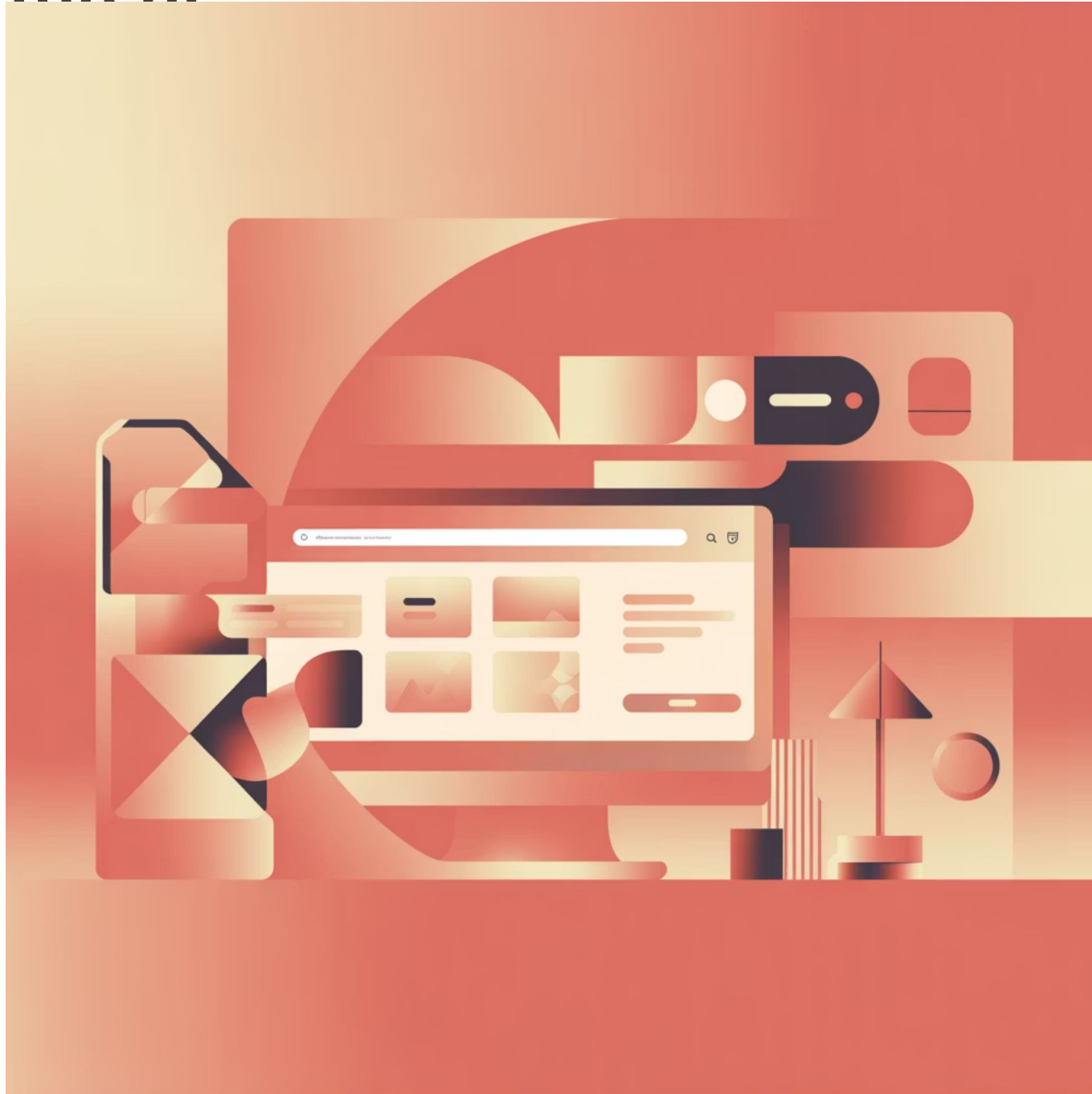
Monitor navigation patterns — users moving between pages suggests perceived semantic closeness

4

## Search Performance

Pages ranking for related queries demonstrate effective semantic proximity to target topics

# Semantic Distance and User Intent



## Aligning Content with Search Intent

Semantic distance directly impacts how well your content matches user intent. When a user's query and your content occupy nearby positions in semantic space, relevance increases dramatically.

### Intent alignment strategies:

1. Map queries to semantic clusters, not just keywords
2. Analyze SERP features to understand Google's semantic interpretation
3. Create content that addresses the full semantic context of user needs
4. Test content against multiple related queries to ensure broad semantic coverage

# Frequently Asked Questions

## What's the difference between semantic distance and semantic relevance?

Semantic distance measures how *far apart* two meanings are, while semantic relevance measures how *usefully related* they are within a given context.

## How does semantic distance improve SEO?

By aligning on-page language, entities, and headings with your topical authority, you minimize distance between your content and target queries, boosting rankings and user trust.

## Is semantic distance measurable with current SEO tools?

Indirectly, yes. Tools that analyze semantic similarity or keyword clustering use distance metrics derived from embeddings or co-occurrence models.

## Does internal linking influence semantic distance?

Absolutely. Well-planned internal links reduce topical isolation, signaling to search engines that related pages form a unified conceptual network.

# Implementation Roadmap

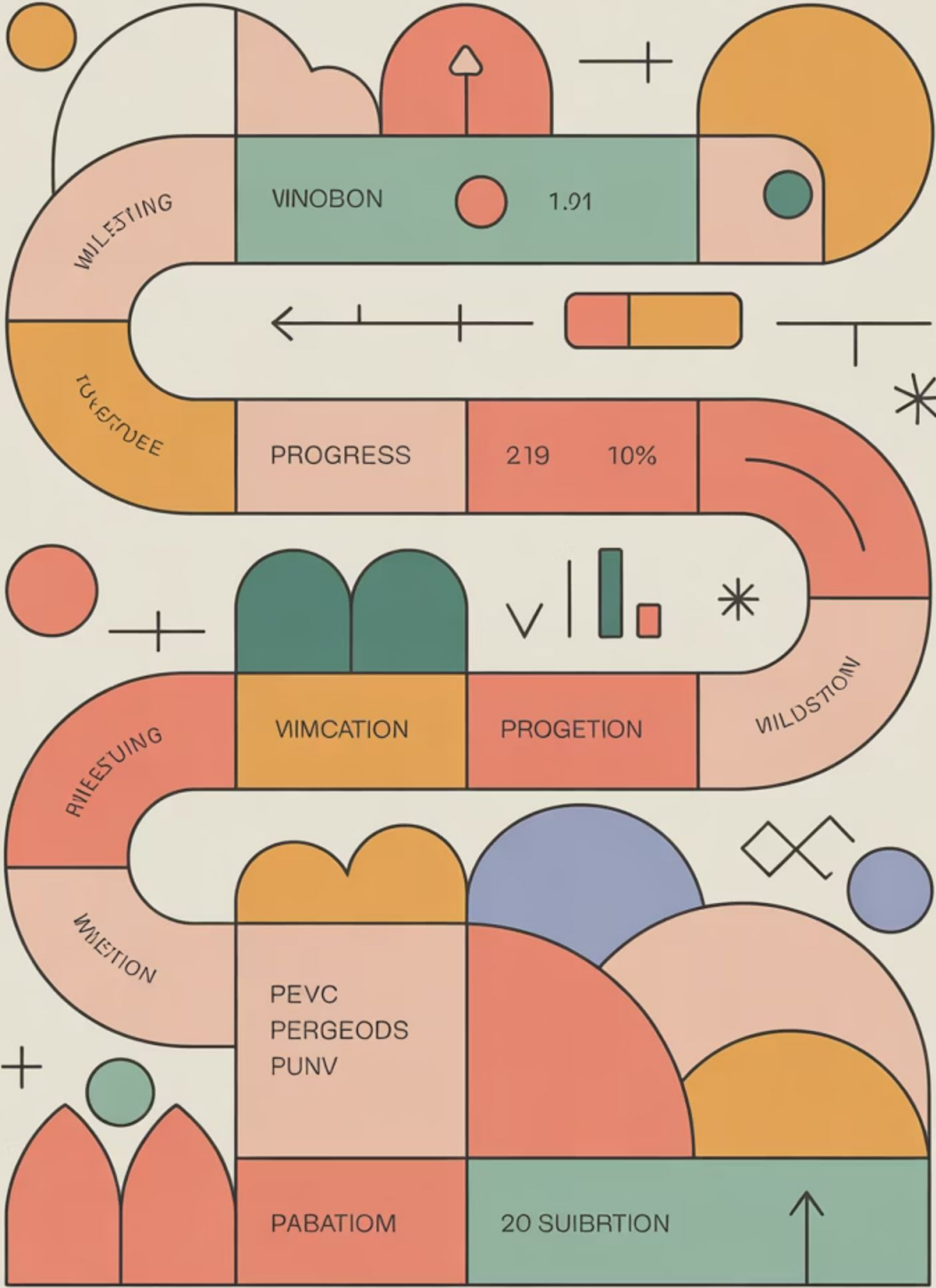
Transform your understanding of semantic distance into actionable improvements for your content strategy:

**Audit Current Content**  
Analyze your existing content to identify semantic gaps and opportunities for tighter clustering. Map relationships between pages and measure topical coherence.

**Optimize Architecture**  
Restructure your site hierarchy to minimize semantic distance between related content. Implement strategic internal linking and improve contextual flow.

**Create Semantic Clusters**  
Develop new content that fills semantic gaps and strengthens topical authority. Ensure each piece maintains tight semantic proximity to cluster themes.

**Monitor and Refine**  
Track performance metrics and user behavior to validate semantic improvements. Continuously refine based on search engine response and user engagement.



# Final Thoughts on Semantic Distance

## Bridging Human Meaning and Machine Understanding

Semantic distance bridges the gap between **human meaning** and **machine understanding**. Whether in AI models, search ranking systems, or semantic SEO, reducing distance improves **comprehension, discoverability, and contextual integrity**.

By building clusters that share short semantic distances, your content becomes not only visible but **intelligently connected** — forming the backbone of sustainable authority in the era of semantic search.



*"The future of search isn't about matching words — it's about understanding meaning. Semantic distance is the compass that guides us there."*

As search engines evolve toward deeper contextual understanding, mastering semantic distance becomes essential for anyone serious about digital visibility and content authority. Start optimizing your semantic architecture today to build the foundation for tomorrow's search success.

# Meet the Trainer: NizamUdDeen

[Nizam Ud Deen](#), a seasoned SEO Observer and digital marketing consultant, brings close to a decade of experience to the field. Based in Multan, Pakistan, he is the founder and SEO Lead Consultant at [ORM Digital Solutions](#), an exclusive consultancy specializing in advanced SEO and digital strategies.

Nizam is the acclaimed author of [The Local SEO Cosmos](#), where he blends his extensive expertise with actionable insights, providing a comprehensive guide for businesses aiming to thrive in local search rankings.

Beyond his consultancy, he is passionate about empowering others. He trains aspiring professionals through initiatives like the **National Freelance Training Program (NFTP)**. His mission is to help businesses grow while actively contributing to the community through his knowledge and experience.

## Connect with Nizam:

LinkedIn: <https://www.linkedin.com/in/seobserver/>

YouTube: <https://www.youtube.com/channel/UCwLcGcVYTiNNwpUXWNKHuLw>

Instagram: <https://www.instagram.com/seobserver/>

Facebook: <https://www.facebook.com/SEO.Observer>

X (Twitter): [https://x.com/SEO\\_Observer](https://x.com/SEO_Observer)

Pinterest: [https://www.pinterest.com/SEO\\_Observer/](https://www.pinterest.com/SEO_Observer/)

Article Title: [What Is Semantic Distance?](#)

