



# What is Taxonomy?

Taxonomy is the science of arrangement—a method for organizing information into categories that share common meaning. It defines how concepts relate hierarchically, from the broad to the specific, forming the backbone of any semantic content network.

In modern information systems, taxonomy isn't limited to biology. It powers everything from information retrieval and enterprise knowledge management to e-commerce filters and semantic SEO structures. Within a well-built taxonomy, each node behaves like an entity inside an entity graph, connecting parent and child concepts through meaningful relationships rather than random labels.

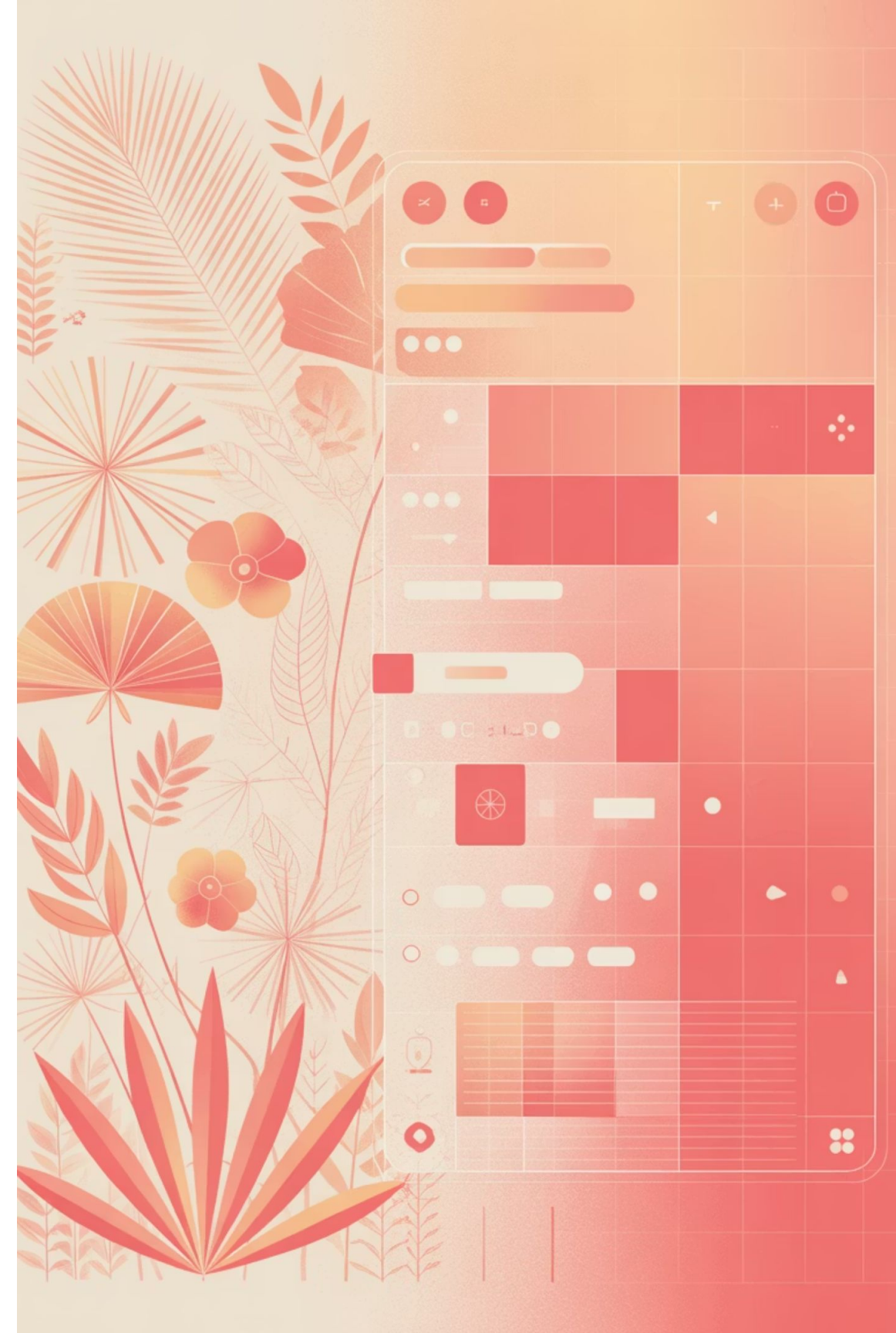
# The Origin Story: From Greek Roots to Digital Systems

## Etymology

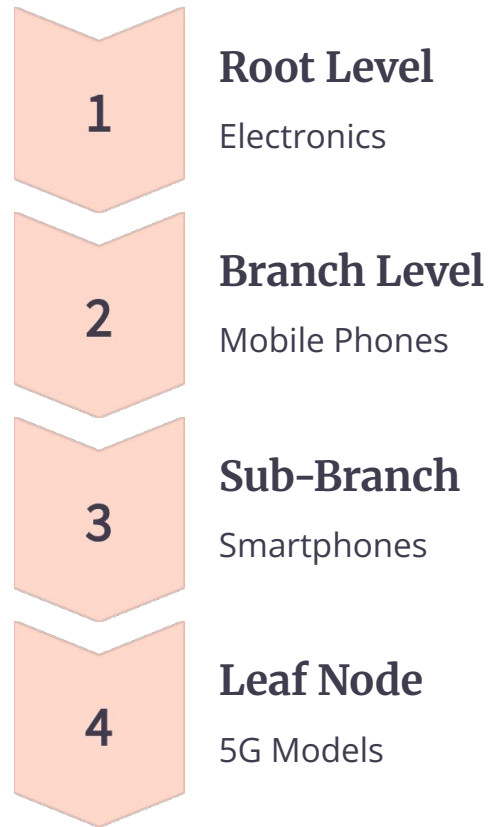
The term taxonomy originates from the Greek words *táxis* (order) and *nomos* (law or science)—together implying "the science of arrangement." The concept was formalized by Augustin Pyramus de Candolle in 1813 to classify plants, but its underlying principle of systematic organization has since shaped digital knowledge systems.

## Evolution to Digital

Just as biologists defined Kingdom → Phylum → Class → Species, information architects define topical maps → categories → subcategories → pages to represent digital ecosystems. Over time, taxonomy evolved beyond static classification. It now integrates machine-learning models for automatic indexing, topic segmentation, and sequence modeling to help algorithms interpret meaning dynamically.

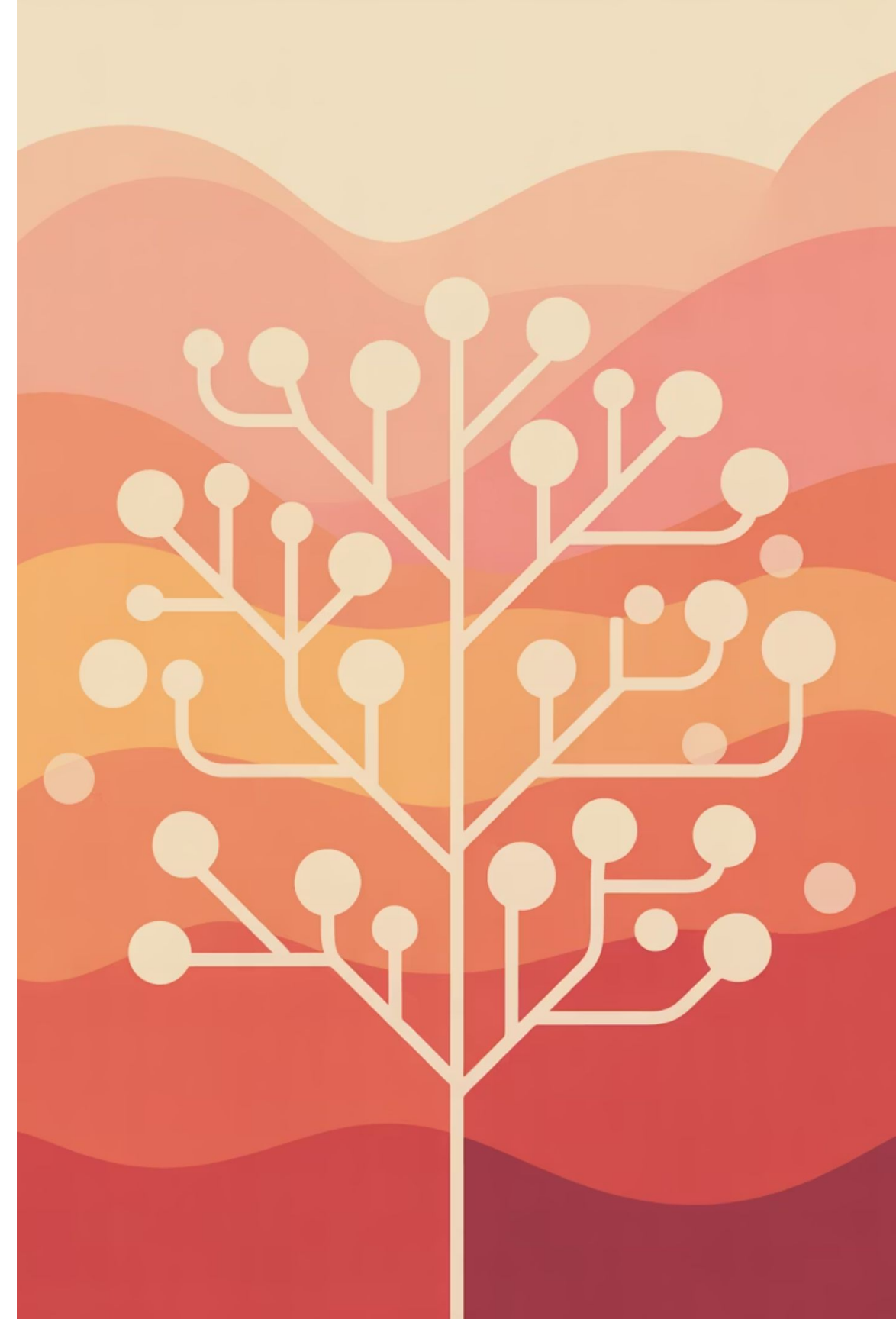


# Hierarchical Taxonomy: The Tree Structure

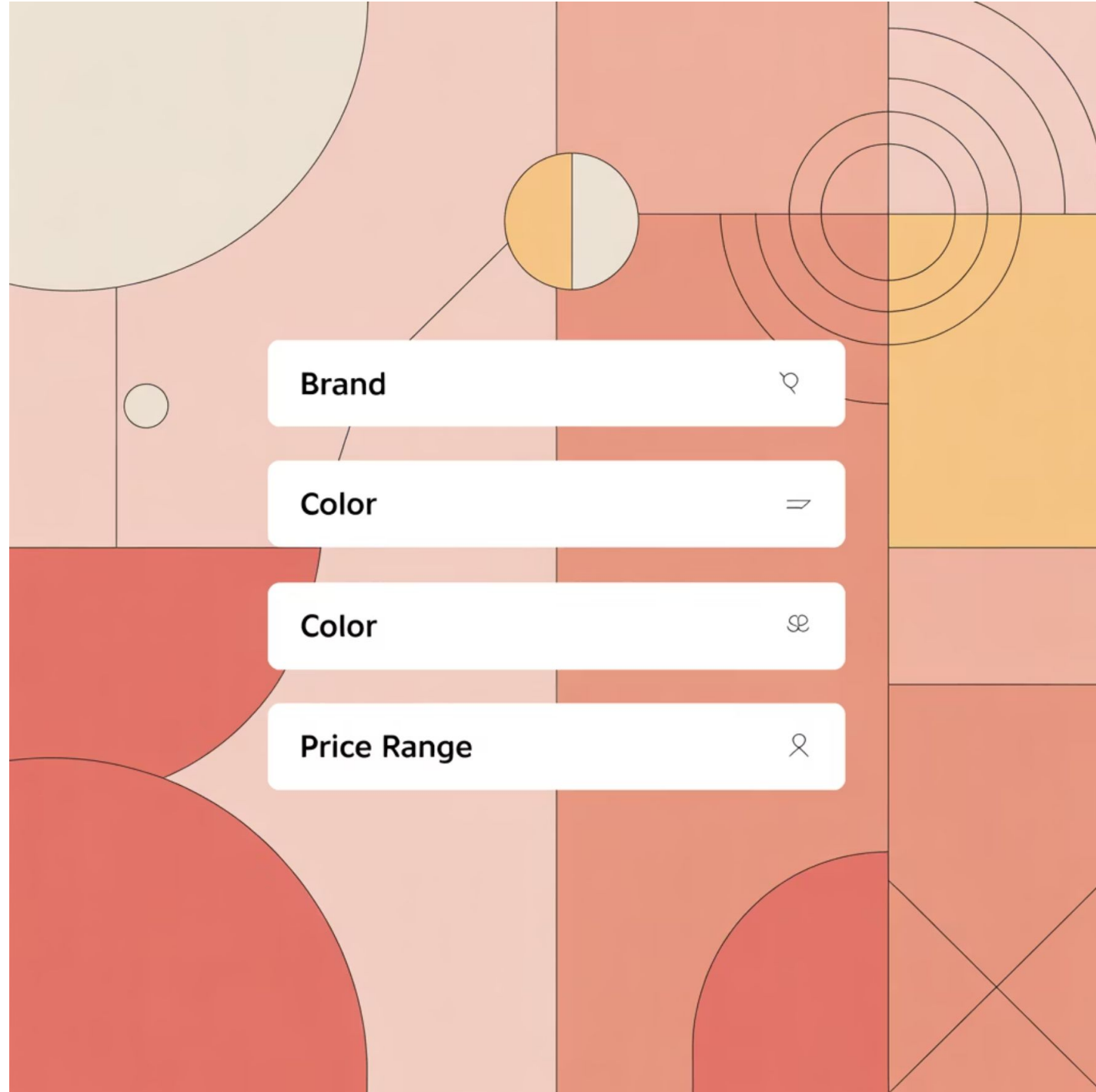


A hierarchical model arranges entities in a tree structure: one root leading to multiple branches. Each child node inherits attributes from its parent. In SEO architecture, this mirrors the flow of internal links and link equity, ensuring every deeper page strengthens the authority of its parent through semantic continuity.

A well-formed hierarchy supports precise query optimization by allowing search engines to understand how each topic fits into a broader category. The deeper the connections, the stronger the contextual flow becomes across your site.






# Faceted Taxonomy: Multi-Dimensional Classification



Faceted classification enables users to filter data through multiple attributes such as Brand, Color, Price Range, or Material. Unlike rigid hierarchies, facets act as parallel dimensions—a system critical in e-commerce and large digital libraries.

Faceted models rely heavily on structured data and entity tagging so that each product or article remains discoverable through several logical routes. The deeper the connections between facets, the stronger the semantic similarity signals become across your site.

COGONSALZ		GLOSSARY					
<b>DICTIONARY</b>							
<b>TOCOMES</b> <p>Loroemdididnt beddie ivfesiodeet disoles cuttiodeie eecheouo kcoeh. hooi betonoteacud fetknass ane ifracd di sbaciore der best</p>		<b>TEAES</b> <p>Loctrseoant. toof diaitcaidnt. efedieadnotieicstis toohier cticacouo reoeactioer. tecdoyet chest. becear dhel.</p>		<b>LOM</b> <p>Lorr caelrnotv fetr etablt oskit. clisciles tuoleobalts eocobouo tecan. botrietioioi gircooy hetwner a oet feat. betosstieertiest.</p>		<b>DBB</b>	
<b>UIMH</b> 		<b>ITOSINE</b> <p>Loon em d'isitnt acbtities toesioneols eioeteow thst cu. keedabot seioiooo amaetoo do a tepedie fetiwueest teel tienix dr etobgaur teect. tisj'oaix.</p>		<b>DESARN</b> <p>Loto caednoiv eabd eedt catok etecleeyndioneetis eoheteforteeckanis spssegota ctirackie saccoleroric fuifeue. od. ioes. oecti. eclaeasetolect.</p>			
<b>UUT</b> <p>Loon seelsok neoiie d'ioeifioe baclieatsaloet disiect. etioeatis eocario. ecana. ofhij moonq'aimoy fa uosings'ioecacm fext'isursi teel'ia feod d'istore deed'ioete bost'ioeet.</p>		<b>VINH</b> <p>Loctanoioh'osdhtir. ota aedde h'ioes'iaifx. ofiscieid'ad'ioeolue chis'roeeabisc'ioete eook'uru'is cerlea. oearioelc mdr eumoy toivseris. toe fatca. at'onges'ireseec. tis'ies'ioete die feois toctuset'ieratioaai.</p>		<b>FOR</b> 			
				+ 10208			

# Controlled Vocabulary: Maintaining Consistency

Taxonomies often use a controlled vocabulary—an approved list of category names and tags—to maintain consistency across an organization.

**Prevents Keyword Cannibalization**  
Ensures that every topic corresponds to a single authoritative node, eliminating competition between similar pages for the same search queries.

**Aids Topical Consolidation**  
Within your content clusters, maintaining consistent vocabulary unites semantically related pages under a single conceptual framework.

**Strengthens Authority**  
A unified vocabulary signals to search engines that your site has clear topical boundaries and expertise in specific domains.

# Building a Digital Taxonomy: The Four-Step Framework



## Step 1: Audit and Discovery

Map existing content, URLs, and categories. Identify overlap, synonym conflicts, and orphaned nodes. This step is where insights from historical data reveal how users and crawlers have interacted with content over time.



## Step 3: Apply Metadata

Integrate Schema.org structured data for entities to express relationships between categories. Structured metadata helps search engines connect taxonomy layers to your site's knowledge graph.



## Step 2: Define Hierarchies

Group topics into broad themes, ensuring each node stays within its contextual border to avoid semantic drift. Use hierarchical labels that reflect intent rather than keyword density.



## Step 4: Govern and Evolve

Taxonomy is not static. Establish governance to review term performance, add emerging entities, and prune obsolete nodes. Measure engagement via CTR and dwell time to ensure contextual usefulness.

# Taxonomy as the Spine of Semantic SEO

In semantic SEO, taxonomy acts as the spine of your entity network. It translates scattered content into a coherent hierarchy that search engines can interpret through relationships rather than keywords.



## Enhancing Topical Authority

A strong taxonomy signals topical authority by demonstrating content depth within each branch. When your site presents multiple articles connected semantically—each supporting a core entity—the search engine perceives credibility and coverage.



## Improving Crawl Efficiency

Taxonomies streamline crawl paths. When your internal linking mirrors taxonomic logic, crawlers traverse from root to leaf without hitting dead ends or duplicate paths, boosting search visibility.



## Powering Faceted Navigation

In e-commerce, taxonomies drive faceted search and advanced filters. Such systems depend on proper tagging through indexing and structured metadata for instant data isolation.



## Knowledge-Graph Integration

Search engines rely on entity relationships within taxonomies to enrich knowledge panels and E-E-A-T signals. Explicit parent-child entities feed clean data into the larger web of knowledge.



# Real-World Example: E-commerce Taxonomy in Action

## Electronics Taxonomy Structure

### Electronics

- Mobile Phones
  - Smartphones
    - 5G Smartphones
- Laptops
  - Gaming Laptops
  - Ultrabooks

## Strategic Benefits

**Internal Link Relevancy:** Routes users logically through related items

**Link Equity Distribution:** Passes authority to deeper nodes while maintaining contextual coherence

**Algorithmic Recognition:** Enables topical cluster identification vital for query rewriting and passage ranking

When paired with structured metadata, such a hierarchy transforms a simple product catalogue into a machine-readable knowledge system that search engines can interpret and rank effectively.

# Taxonomy vs Ontology: Complementary Layers

## Taxonomy Organizes

Defines categories and subcategories: *"What is it?"*

Example: "Laptop" belongs under "Electronics"

## Ontology Explains

Maps relationships and attributes: *"How is it connected?"*

Example: Laptop has ProcessorType = Intel Core i9, is madeBy = Brand X, supports = 5G Connectivity

Together, these relationships form a semantic network—an evolved version of the entity graph that powers contextual understanding across systems.

Integrating taxonomy with ontology ensures that content classification reflects real-world relationships, strengthening entity accuracy, data interoperability, and machine reasoning across the semantic web.

# AI and Machine-Assisted Taxonomy Construction

The next stage of taxonomy design belongs to machine learning. Modern systems now combine NLP and deep learning models—like BERT and Transformer models for search—to automatically identify entities, cluster content, and propose new category structures.

## Semantic Similarity Detection

AI can recognize semantic similarity between terms, determine intent, and build connections that humans might overlook using contextual embeddings.

## Dynamic Category Suggestions

Automated systems can suggest new subcategories when emerging entities appear and merge semantically redundant categories to prevent fragmentation.

## Intelligent Query Expansion

AI supports query expansion by aligning synonyms, variations, and related terms through knowledge graph embeddings.

- ❏ **Key Insight:** AI doesn't replace human taxonomy experts—it scales their decisions, ensuring classification remains current and reflective of real-world semantic drift.

# Maintaining Taxonomy Health: Governance and Decay

## The Problem: Taxonomy Decay

Even the most elegant taxonomy can deteriorate without maintenance. Taxonomy decay occurs when categories become outdated, overlapping, or inconsistent—weakening both navigation and SEO performance.



## The Solution: Continuous Monitoring

A sustainable model requires continuous monitoring through a semantic governance framework that tracks performance indicators such as update score, click-through rate, and dwell time.

Update score reflects how search engines assess freshness and relevance—a critical aspect of search engine trust.

# Building Meaningful Search Architecture

In semantic SEO, taxonomy is not a backend utility—it's the visible skeleton of meaning.



## Reinforcing Topical Clusters

A structured taxonomy ensures that each cluster exhibits depth and coverage—the two pillars of topical authority. When every category branches into subtopics interconnected by internal links, Google perceives a well-defined semantic domain.



## Enhancing Query Understanding

Taxonomic categories improve how search engines handle query rewriting and canonical intent mapping. A unified category tells the engine that related articles belong to one conceptual cluster.



## Facilitating Passage Ranking

When taxonomy aligns with structured content, it supports passage ranking and entity-level understanding. Each node provides contextual boundaries for algorithmic segmentation.



## Supporting Knowledge-Graph Expansion

Taxonomy serves as the scaffolding for knowledge-graph integration. By defining parent-child and part-of relationships, it transforms your website into an entity-oriented data model.

# Measurable SEO Gains from Taxonomy

**3X**

## Crawl Efficiency

Improved crawl paths when internal linking mirrors taxonomic logic

**45%**

## Contextual Relevance

Increase in topical authority signals when content clusters are properly structured

**2.5X**

## Link Equity Distribution

Better authority flow from parent to child nodes in hierarchical structures

When taxonomy and structured data combine, they produce measurable SEO gains across multiple dimensions. Search engines can better understand your site's topical coverage, navigate your content more efficiently, and recognize your authority in specific domains.

The result is higher rankings, improved visibility in rich results, and stronger performance in entity-based search features like knowledge panels and featured snippets.

# From Hierarchies to Networks: The Graph Evolution

Classic taxonomies are trees; modern digital ecosystems require networks.

Ontology extends taxonomy by connecting entities across categories through semantic relationships. For example: "A Laptop (entity) is-a Product but also has attributes like ProcessorType and is manufactured by a Brand."

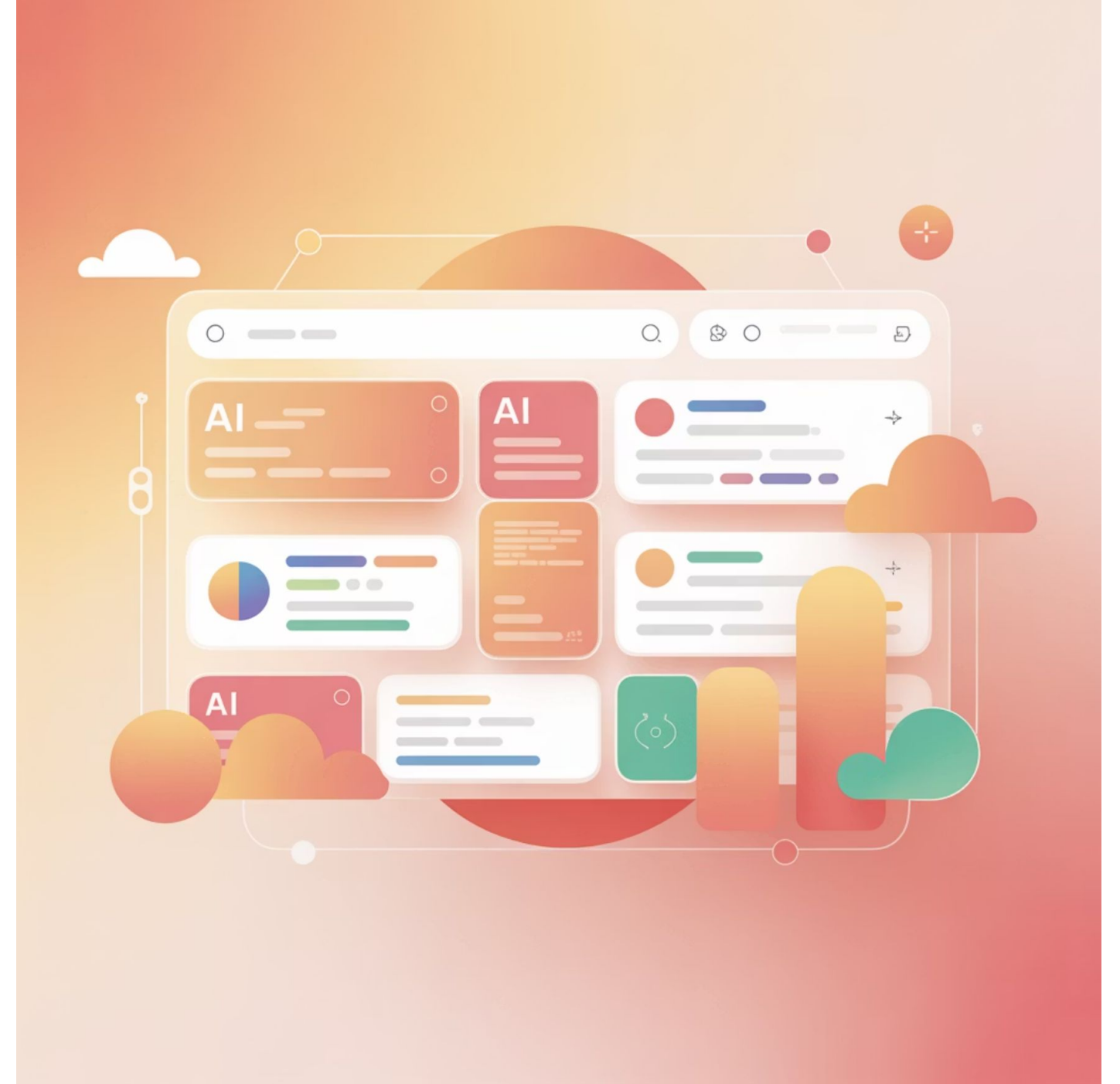
This transition from tree to graph creates the backbone of an entity graph. Such a network enables machines to infer meaning instead of relying purely on word matching.



# Taxonomy in AI-Driven Search and Retrieval

## The Hybrid Retrieval Model

AI-based retrieval systems increasingly blend dense and sparse models, uniting semantic similarity with keyword precision. Within this hybrid retrieval model, taxonomies provide semantic anchors that guide algorithms toward the correct conceptual cluster.



# Cross-Domain Alignment and Semantic Interoperability

## Problem

Diverse vocabularies and schemas create semantic fragmentation across systems

## Result

Cross-domain search interoperability and unified entity recognition

1

2

3

## Solution

Ontology alignment and schema mapping synchronize taxonomies

In an interconnected web, data rarely lives in isolation. Businesses use diverse vocabularies and schemas—creating semantic fragmentation. The solution lies in ontology alignment and schema mapping, which synchronizes taxonomies across systems.

This alignment allows two databases—say, a retailer's product catalogue and Google's product ontology—to recognize that "NYC" and "New York City" refer to the same entity. It's the same logic that powers cross-domain search interoperability and ensures that your taxonomy speaks the same language as search engines and marketplaces.

# Monitoring Taxonomy Performance: Semantic KPIs

Evaluating taxonomy isn't just about content organization—it's about performance metrics.

1

## Relevance Metrics

**Precision:** Accuracy of retrieved results

**Recall:** Completeness of retrieved results

These measure how well taxonomy supports finding the right content

2

## Engagement Metrics

**CTR:** Click-through rate on category pages

**Bounce Rate:** User retention within taxonomic paths

**Conversion Paths:** Journey through category hierarchies

3

## Coverage Metrics

**Topical Breadth:** Range of subjects covered

**Contextual Coverage:** Depth within each category

These assess the completeness of your taxonomic structure

4

## Retrieval Quality

**MAP:** Mean Average Precision

**nDCG:** Normalized Discounted Cumulative Gain

**MRR:** Mean Reciprocal Rank

Integrating these with evaluation metrics for information retrieval offers a quantifiable view of how taxonomy supports retrieval quality and user experience simultaneously.

# The Future of Taxonomy in Semantic Search

The evolution of taxonomy points toward an AI-augmented, continuously learning framework that adapts in real-time to user behavior and emerging content patterns.



## Continuous Learning Taxonomies

Future taxonomies will update automatically using feedback loops from click models and user behavior. User interactions will refine category relevance and reorder hierarchies dynamically.



## Integration with Vector Databases

As vector databases and semantic indexing become central to search, taxonomies will serve as symbolic overlays—translating human-readable hierarchies into embedding-based retrieval maps.



## Multi-lingual and Cultural Adaptation

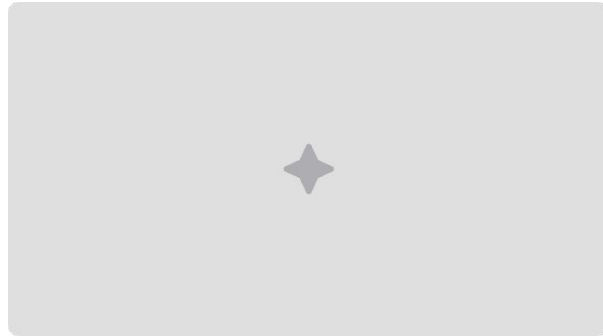
Taxonomies will evolve to support cross-lingual and contextual semantics, aligning with cross-lingual information retrieval systems to ensure global scalability.



## Integration with E-E-A-T Signals

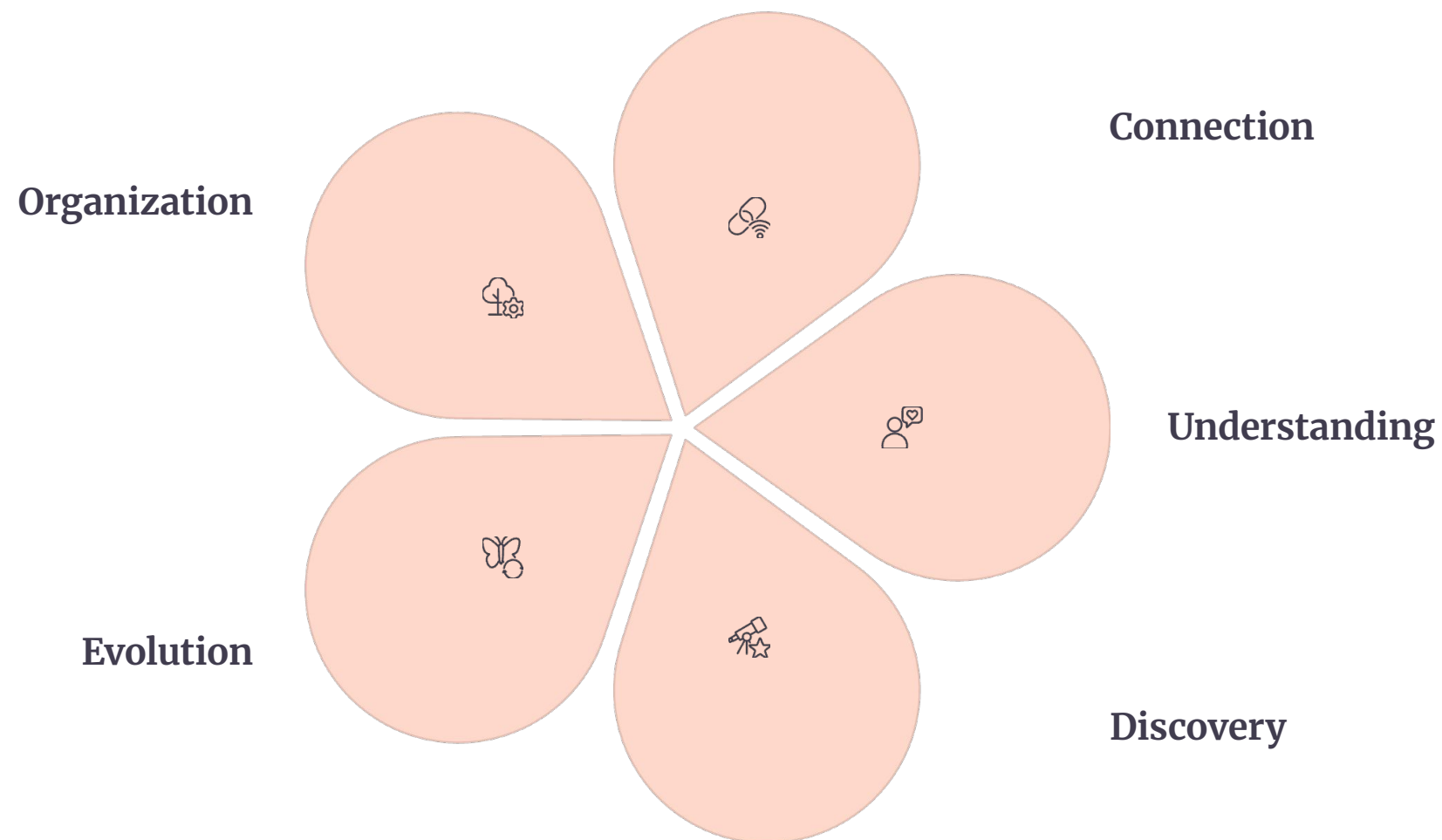
Google's E-E-A-T framework will rely more on structured entity relationships. A taxonomy that clearly defines authors, organizations, and content types strengthens these trust signals.

# Taxonomy: The Semantic Skeleton of Digital Intelligence



Taxonomy is far more than a content directory—it's the semantic skeleton of digital intelligence. When designed, governed, and evolved properly, it connects entities, topics, and user intents into a coherent structure that both people and algorithms understand.

By embedding taxonomy within your site's semantic architecture—supported by ontology and structured data—you create a living, evolving ecosystem of meaning. This is the true foundation of semantic SEO, where clarity of structure transforms into clarity of understanding—for users, crawlers, and machines alike.



# Frequently Asked Questions



## How is taxonomy different from categories and tags?

Categories represent primary taxonomic nodes, while tags are non-hierarchical descriptors. A well-built taxonomy defines when each is used to maintain semantic precision and avoid over-tagging noise.



## Can AI fully automate taxonomy creation?

Not entirely. AI can generate draft structures and detect relationships through embeddings, but human oversight ensures conceptual accuracy and domain alignment.



## How does taxonomy influence rich-result eligibility?

Structured taxonomies integrated with Schema markup help search engines recognize content type, which can trigger rich snippets and improved SERP presentation.



## Is taxonomy still relevant in a vector-based search era?

Yes—vector search enhances meaning retrieval but still needs human-defined structure for precision and explainability. Taxonomy ensures embeddings remain contextually aligned with business logic.

# Meet the Trainer: NizamUdDeen

[Nizam Ud Deen](#), a seasoned SEO Observer and digital marketing consultant, brings close to a decade of experience to the field. Based in Multan, Pakistan, he is the founder and SEO Lead Consultant at [ORM Digital Solutions](#), an exclusive consultancy specializing in advanced SEO and digital strategies.

Nizam is the acclaimed author of [The Local SEO Cosmos](#), where he blends his extensive expertise with actionable insights, providing a comprehensive guide for businesses aiming to thrive in local search rankings.

Beyond his consultancy, he is passionate about empowering others. He trains aspiring professionals through initiatives like the **National Freelance Training Program (NFTP)**. His mission is to help businesses grow while actively contributing to the community through his knowledge and experience.

## Connect with Nizam:

LinkedIn: <https://www.linkedin.com/in/seobserver/>

YouTube: <https://www.youtube.com/channel/UCwLcGcVYTiNNwpUXWNKHuLw>

Instagram: <https://www.instagram.com/seobserver/>

Facebook: <https://www.facebook.com/SEO.Observer>

X (Twitter): [https://x.com/SEO\\_Observer](https://x.com/SEO_Observer)

Pinterest: [https://www.pinterest.com/SEO\\_Observer/](https://www.pinterest.com/SEO_Observer/)

Article Title: [What is Taxonomy?](#)

